

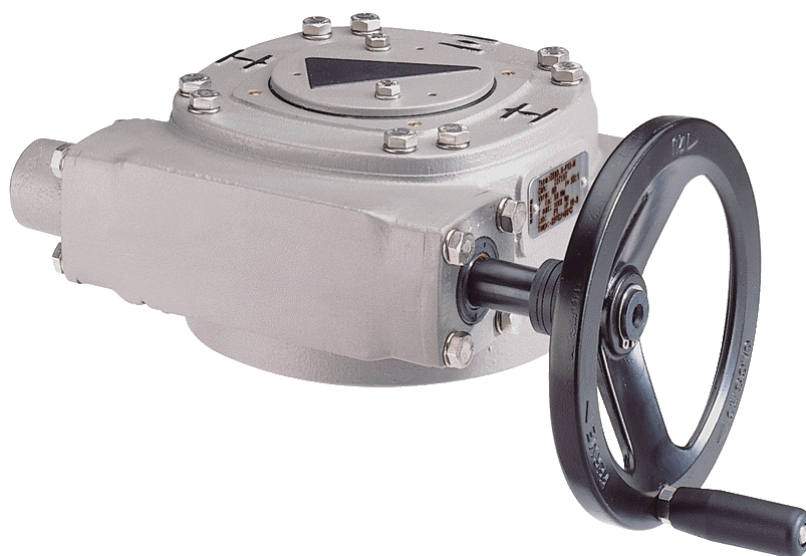
## **AUMA awarded prestigious water project in Saudi Arabia**

Provision of water supplies is a priority for Riyadh, the capital of the Saudi Arabian kingdom located on a plateau in a highly arid area at the heart of the Arabian peninsula.

Dramatic expansion of the city, now home to 3,500,000 people, has depleted the area's traditionally rich, natural water supplies. Saudi Arabia has addressed this by becoming the world's largest producer of desalinated water and desalination now meets 70% of the country's drinking water requirements. A network of pipes supplying major urban and industrial centres runs for more than 2,300 miles.

Against the backdrop of chronic water shortage and a rising population, the Saline Water Conversion Corporation, which is responsible for supplying 50% of all municipal water in the region, has invested heavily in desalination. As part of this investment program, a prestigious contract has been awarded to Al Rafid to supply a 400km water pipeline and AUMA actuators to provide over 250 part-turn worm gearboxes for butterfly valves.

AUMA gearboxes are used wherever a 90° swivel movement is required for the operation of a valve or damper requiring operating torque up to 265,000 ft lb. Key reasons for the selection of AUMA products were high integrity enclosure protection, superior anti-corrosion features and a wide ambient temperature range that is mandatory for Saudi Arabia.



**AUMA worm gearbox model GS 250.3**